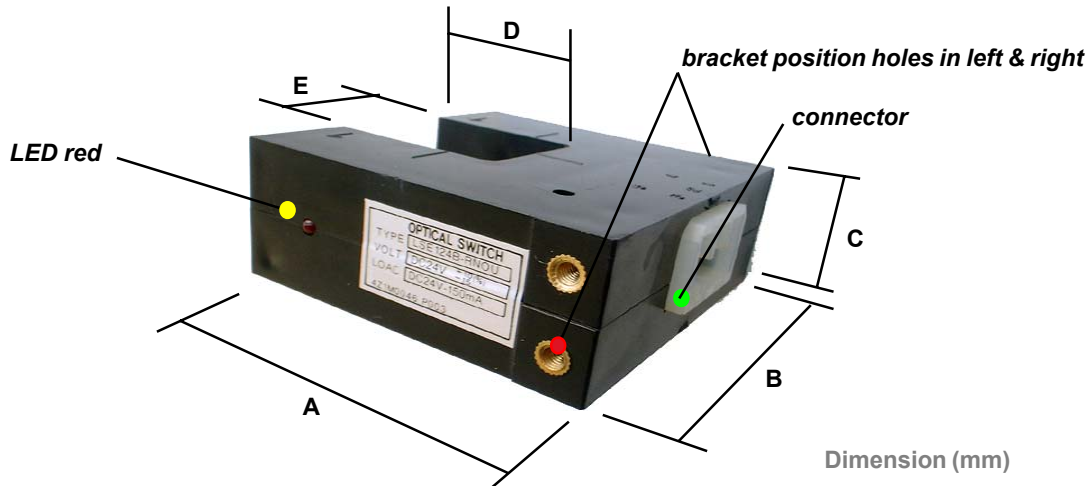


OPTICAL LEVELLING SWITCH

The horse-shoe shaped optical levelling switch provide noiseless sensing of slowdown and landing positions of the elevator



Dimension (mm)

A	B	C	D	E
70	73	28	35	28

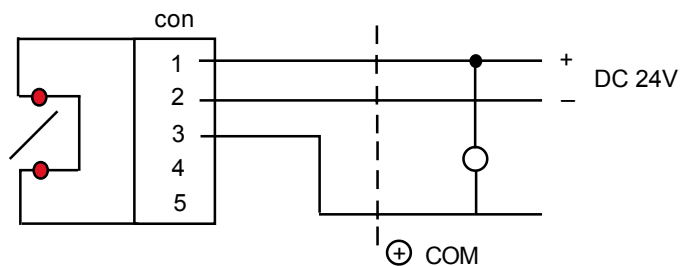
FEATURES

- 24V DC single beams
- pin cables length 500mm max.
- plug-in housing type connector for external wirings
- mounting bracket available on both sides
- piled-up stocking available, no interference
- color of lens : Red 24VDC

ORDERING CODES

- LA** slot levelling switch with cable , NO with LED
- LB** slot levelling switch with cable , NC with LED

CIRCUIT DIAGRAM



CHARACTERISTICS

- Type** LSE 124B- RNOU, Normally Closed, RED Lights off when object enters slot
LSE 124A- QNOU, Normally Open, RED Lights on when object enters slot
- Volt** DC 24V- 10(%)
- 15
- LOAC** DC 24V- 150mA
- Cover case** ABS Plastic, protection level IP 60